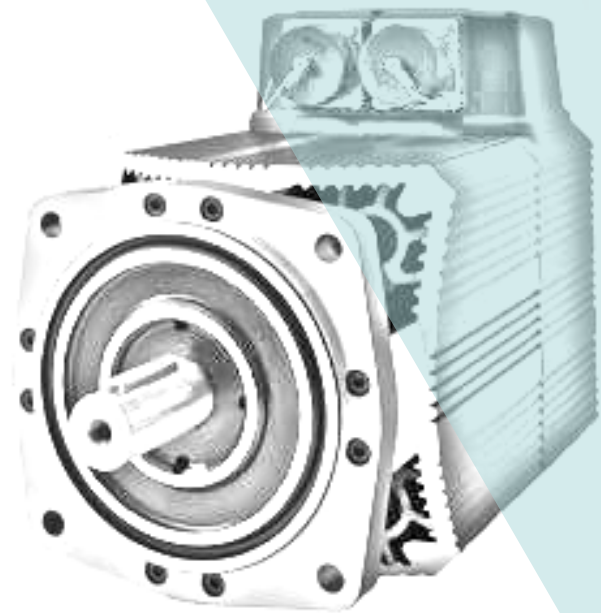


**SYMBANG**



2019 CATALOG

# **STEPPER MOTOR**



## 1.1 混合式步进电机 Hybrid Stepper Motor

## 1.8° 20mm两相混合式步进电机 1.8°20mm (NEMA8)2phase hybrid stepper motor

### 基本性能 / General Specification:

项目	Item	性能 (Specifications)
步距角	Step Angle	1.8°
温升	Temperature Rise	80°C max
环境温度	Ambient Temperature	-20°C ~ +50°C
绝缘电阻	Insulation Resistance	100 MΩ Min. ,500VDC
电气强度	Dielectric Strength	500VAC for 1minute
径向间隙	Shaft Radial Play	0.02Max. (450g-load)
轴向间隙	Shaft Axial Play	0.08Max. (450g-load)
最大径向压力	Max. radial force	28N (20mm from the flange)
最大轴向压力	Max. axial force	10N



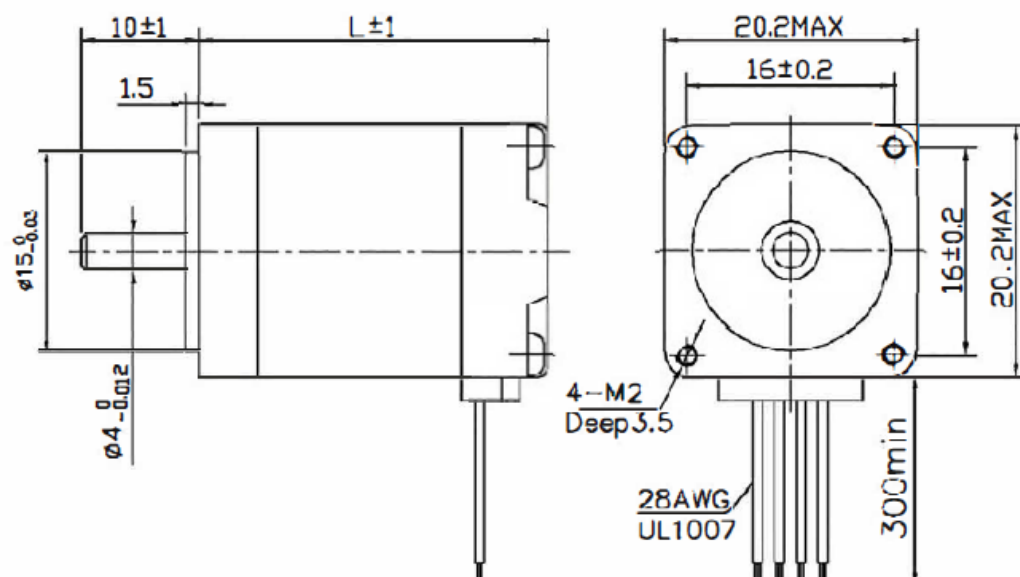
### 电机规格 / Electrical Specifications:

型号 Model No.	步距角 Step Angle	长度 Motor Length	电流 Current /Phase	电阻 Resistance /Phase	电感 Inductance /Phase	静转矩 Holding Torque	引线数 # of Leads	重量 Weight
	(°)	(L)mm	A	Ω	mH	g.cm	No.	Kg
DTM20HS30	1.8	30	0.6	6.5	1.7	180	4	0.06
DTM20HS38	1.8	38	0.6	10	2.5	300	4	0.08
DTM20HS42	1.8	42	0.8	5.4	1.5	300	4	0.09

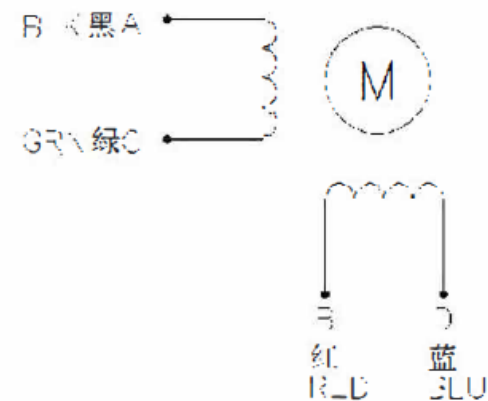
以上仅为代表产品，特殊要求产品可根据客户要求订制。

Above only for representative products, products of special request can be made according to the customer request.

### 电机外型图 / Dimensions: (单位 / Unit = mm)



### 接线图 / Wiring Diagram:



## 1.1 混合式步进电机 Hybrid Stepper Motor

## 1.8° 28mm两相混合式步进电机 1.8° 28mm(NEMA11) 2phase hybrid stepper motor

### 基本性能 / General Specification:

项目	Item	性能 ( Specifications )
步距角	Step Angle	1.8°
温升	Temperature Rise	80°C max
环境温度	Ambient Temperature	-20°C ~ +50°C
绝缘电阻	Insulation Resistance	100 MΩ Min. ,500VDC
电气强度	Dielectric Strength	500VAC for 1 minute
径向间隙	Shaft Radial Play	0.02Max. (450g-load)
轴向间隙	Shaft Axial Play	0.08Max. (450g-load)
最大径向压力	Max. radial force	28N (20mm from the flange)
最大轴向压力	Max. axial force	10N



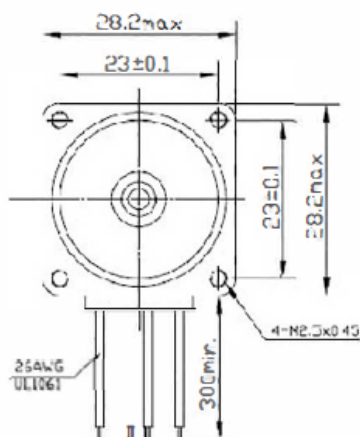
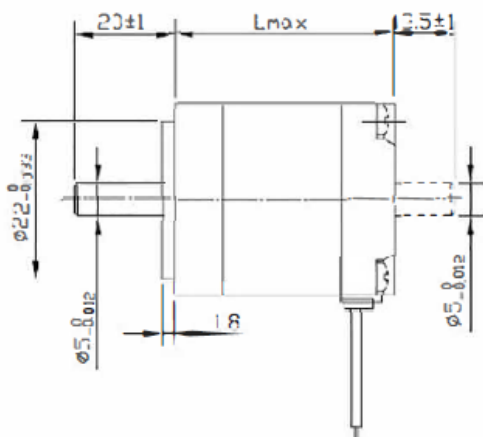
### 电机规格 / Electrical Specifications:

型号 Model No.	步距角 Step Angle	长度 Motor Length	电流 Current /Phase	电阻 Resistance /Phase	电感 Inductance /Phase	静转矩 Holding Torque	引线数 # of Leads	转子惯量 Rotor Inertia	重量 Weight
	(°)	(L)mm	A	Ω	mH	g.cm	No.	g.cm <sup>2</sup>	Kg
DTM28HS28	1.8	28	0.35	12	5.8	450	4	6	0.11
DTM28HS32	1.8	32	0.67	5.6	3.4	600	4	9	0.11
DTM28HS45	1.8	45	0.95	3.4	1.2	750	6	12	0.14
DTM28HS45	1.8	45	0.67	6.8	4.9	950	4	12	0.14
DTM28HS51	1.8	51	0.95	4.6	1.8	900	6	18	0.2
DTM28HS51	1.8	51	0.67	9.2	7.2	1200	4	18	0.2

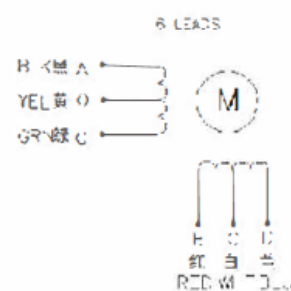
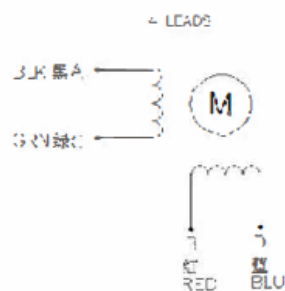
以上仅为代表产品，特殊要求产品可根据客户要求订制。

Above only for representative products, products of special request can be made according to the customer request.

### 电机外型图 / Dimensions: (单位 / Unit = mm)



### 接线图 / Wiring Diagram:



## 1.1 混合式步进电机

Hybrid Stepper Motor

## 0.9° 35mm两相混合式步进电机

0.9°35mm(NEMA 14) 2phase hybrid stepper motor

### 基本性能 / General Specification:

项目	Item	性能 (Specifications)
步距角	Step Angle	0.9°
温升	Temperature Rise	80℃max
环境温度	Ambient Temperature	-20℃ ~ +50℃
绝缘电阻	Insulation Resistance	100 MΩ Min. ,500VDC
电气强度	Dielectric Strength	500VAC for 1minute
径向间隙	Shaft Radial Play	0.02Max. (450g-load)
轴向间隙	Shaft Axial Play	0.08Max. (450g-load)
最大径向压力	Max. radial force	28N (20mm from the flange)
最大轴向压力	Max. axial force	10N



### 电机规格 / Electrical Specifications:

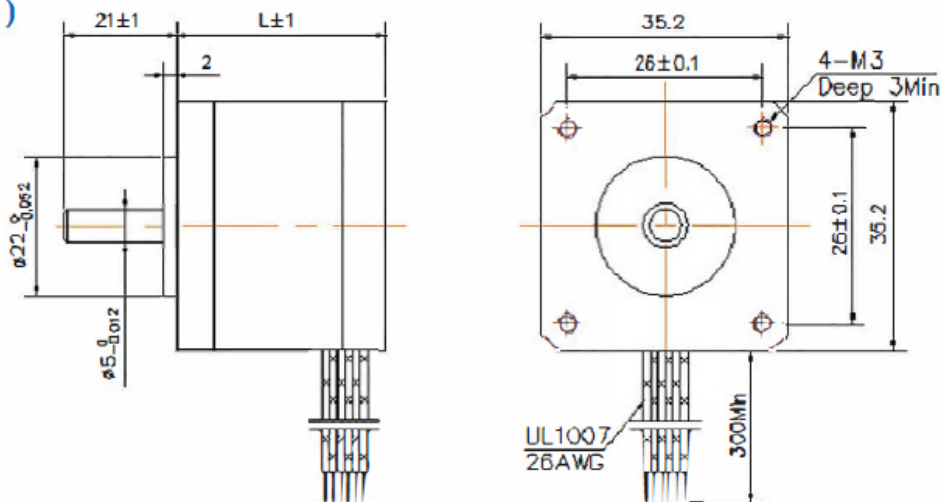
型号 Model No.	步距角 Step Angle	长度 Motor Length	电流 Current /Phase	电阻 Resistance /Phase	电感 Inductance /Phase	静转矩 Holding Torque	引线数 # of Leads	定位转矩 Detent Torque	转子惯量 Rotor Inertia	重量 Weight
	(°)	(L)mm	A	Ω	mH	g.cm	No.	g.cm	g.cm <sup>2</sup>	Kg
DTM35HM27	0.9	27	0.5	10	14	1000	4	80	6	0.13
DTM35HM34	0.9	34	1	2	3	1200	4	110	9	0.17
DTM35HM40	0.9	40	1	2	4	1500	4	140	12	0.22

以上仅为代表产品，特殊要求产品可根据客户要求订制。

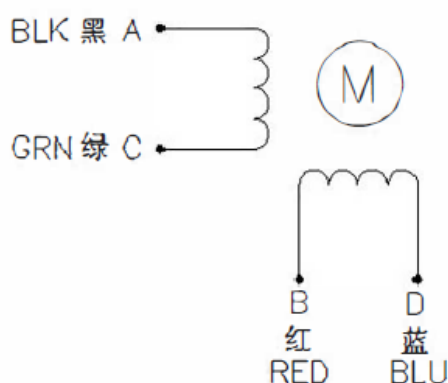
Above only for representative products, products of special request can be made according to the customer request.

### 电机外型图 / Dimensions:

(单位 / Unit = mm)



### 接线图 / Wiring Diagram:



## 1.1 混合式步进电机 Hybrid Stepper Motor

## 1.8° 35mm两相混合式步进电机 1.8° 35mm(NEMA14) 2phase hybrid stepper motor

### 基本性能 / General Specification:

项目	Item	性能 ( Specifications )
步距角	Step Angle	1.8°
温升	Temperature Rise	80°C max
环境温度	Ambient Temperature	-20°C ~ +50°C
绝缘电阻	Insulation Resistance	100 MΩ Min. ,500VDC
电气强度	Dielectric Strength	500VAC for 1minute
径向间隙	Shaft Radial Play	0.02Max. (450g-load)
轴向间隙	Shaft Axial Play	0.08Max. (450g-load)
最大径向压力	Max. radial force	28N (20mm from the flange)
最大轴向压力	Max. axial force	10N



### 电机规格 / Electrical Specifications:

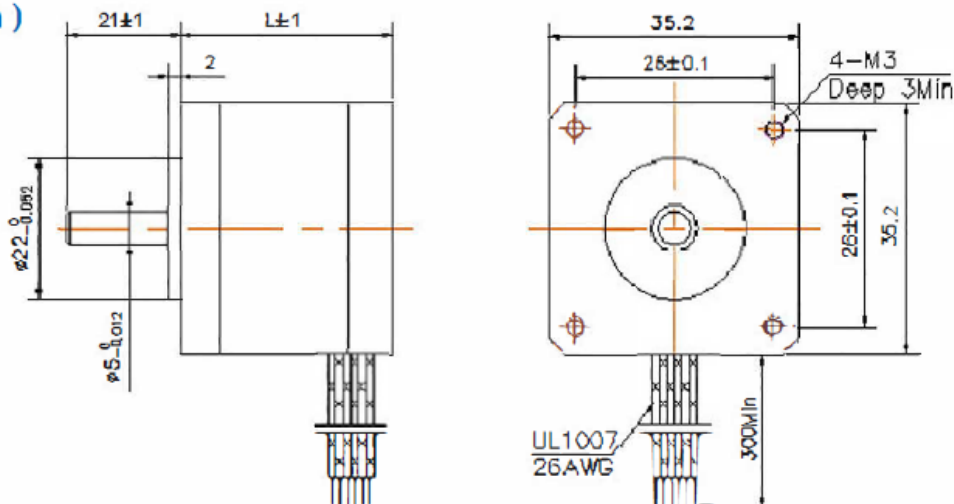
型号 Model No.	步距角 Step Angle	长度 Motor Length	电流 Current /Phase	电阻 Resistance /Phase	电感 Inductance /Phase	静转矩 Holding Torque	引线数 # of Leads	定位转矩 Detent Torque	转动惯量 Rotor Inertia	重量 Weight
	( ° )	(L)mm	A	Ω	mH	g.cm	No.	g.cm	g.cm <sup>2</sup>	Kg
DTM35HS28	1.8	28	0.5	20	14	1000	4	80	11	0.13
DTM35HS34	1.8	34	1	2.7	4.3	1400	4	100	13	0.17
DTM35HS42	1.8	42	1	3.8	3.5	2000	4	125	23	0.22

以上仅为代表产品，特殊要求产品可根据客户要求订制。

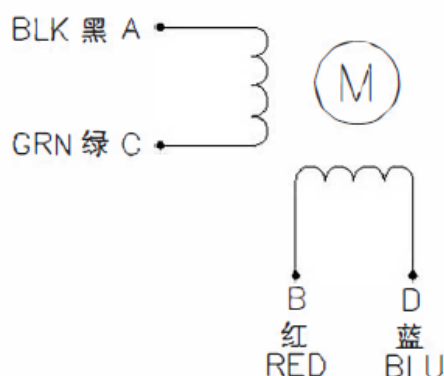
Above only for representative products, products of special request can be made according to the customer request.

### 电机外型图 / Dimensions:

( 单位 / Unit = mm )



### 接线图 / Wiring Diagram:



## 1.1 混合式步进电机 Hybrid Stepper Motor

## 0.9° 42mm两相混合式步进电机 0.9°42mm(NEMA 17) 2phase hybrid stepper motor

### 基本性能 / General Specification:

项目	Item	性能 (Specifications)
步距角	Step Angle	0.9°
温升	Temperature Rise	80℃max
环境温度	Ambient Temperature	-20℃ ~ +50℃
绝缘电阻	Insulation Resistance	100 MΩ Min. ,500VDC
电气强度	Dielectric Strength	500VAC for 1minute
径向间隙	Shaft Radial Play	0.02Max. (450g-load)
轴向间隙	Shaft Axial Play	0.08Max. (450g-load)
最大径向压力	Max. radial force	28N (20mm from the flange)
最大轴向压力	Max. axial force	10N



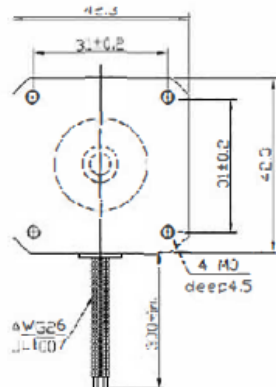
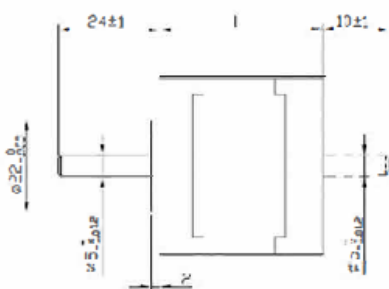
### 电机规格 / Electrical Specifications:

型号 Model No.	步距角 Step Angle	长度 Motor Length	电流 Current /Phase	电阻 Resistance /Phase	电感 Inductance /Phase	静转矩 Holding Torque	引线数 # of Leads	定位转矩 Detent Torque	转子惯量 Rotor Inertia	重量 Weight
DTM42HM34	0.9	34	1.33	2.1	4.2	2.2	4	200	35	0.22
DTM42HM34	0.9	34	0.31	38.5	33	1.58	6	200	35	0.22
DTM42HM34	0.9	34	0.95	4.2	4.0	1.58	6	200	35	0.22
DTM42HM40	0.9	40	1.68	1.65	3.2	3.3	4	220	54	0.28
DTM42HM40	0.9	40	0.4	30	30	2.59	6	220	54	0.28
DTM42HM40	0.9	40	1.2	3.3	3.4	2.59	6	220	54	0.28
DTM42HM48	0.9	48	1.68	1.65	4.1	4.4	4	250	68	0.38
DTM42HM48	0.9	48	1.2	3.3	4	3.17	6	250	68	0.38
DTM42HM48	0.9	48	0.4	30	38	3.17	6	250	68	0.38
DTM42HM60	0.9	60	1.68	1.65	5.0	5.5	4	270	106	0.55

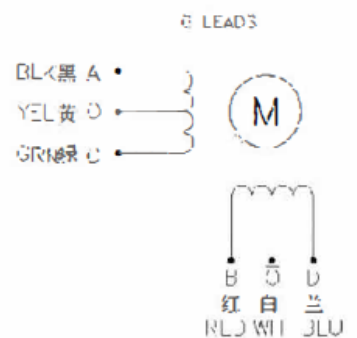
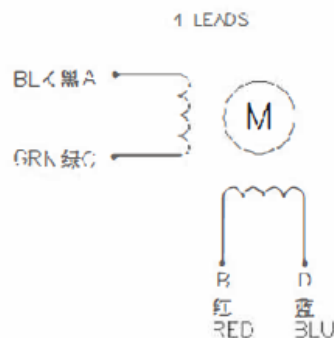
以上仅为代表产品，特殊要求产品可根据客户要求订制。

Above only for representative products, products of special request can be made according to the customer request.

### 电机外型图 / Dimensions: (单位 / Unit = mm)



### 接线图 / Wiring Diagram:



# 1.1 混合式步进电机

## Hybrid Stepper Motor

# 1.8° 42mm两相混合式步进电机

## 1.8°42mm(NEMA17)2 phase hybrid stepper motor

### 基本性能 / General Specification:

项目	Item	性能 ( Specifications )
步距角	Step Angle	1.8°
温升	Temperature Rise	80°C max
环境温度	Ambient Temperature	-20°C ~ +50°C
绝缘电阻	Insulation Resistance	100 MΩ Min. ,500VDC
电气强度	Dielectric Strength	500VAC for 1 minute
径向间隙	Shaft Radial Play	0.02Max. (450g-load)
轴向间隙	Shaft Axial Play	0.08Max. (450g-load)
最大径向压力	Max. radial force	28N (20mm from the flange)
最大轴向压力	Max. axial force	10N



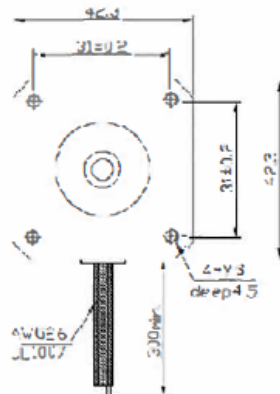
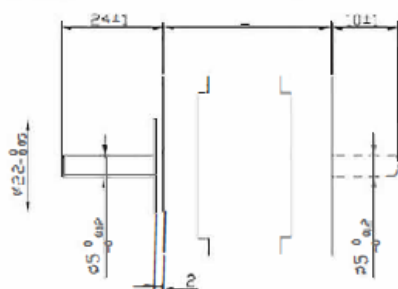
### 电机规格 / Electrical Specifications:

型号 Model No.	步距角 Step Angle	长度 Motor Length	电流 Current /Phase	电阻 Resistance /Phase	电感 Inductance /Phase	静转矩 Holding Torque	引线数 # of Leads	定位转矩 Detent Torque	转子惯量 Rotor Inertia	重量 Weight
	( ° )	(L)mm	A	Ω	mH	kg.cm	No.	g.cm	g.cm <sup>2</sup>	Kg
DTM42HS25	1.8	25	0.4	24	36	1.8	4	75	20	0.15
DTM42HS28	1.8	28	0.5	20	21	1.5	4	85	24	0.22
DTM42HS34	1.8	34	1.33	2.1	2.5	2.2	4	120	34	0.22
DTM42HS34	1.8	34	0.4	24	15	1.6	6	120	34	0.22
DTM42HS34	1.8	34	0.95	4.2	2.5	1.6	6	120	34	0.22
DTM42HS40	1.8	40	0.4	30	30	2.6	6	150	54	0.28
DTM42HS40	1.8	40	1.68	1.65	3.2	3.6	4	150	54	0.28
DTM42HS40	1.8	40	1.2	3	2.7	2.9	6	150	54	0.28
DTM42HS48	1.8	48	0.4	30	25	3.1	6	260	68	0.38
DTM42HS48	1.8	48	1.68	1.65	2.8	4.4	4	260	68	0.38
DTM42HS48	1.8	48	1.2	3.3	2.8	3.17	6	260	68	0.38
DTM42HS60	1.8	60	0.4	30	39	6.5	6	280	102	0.55
DTM42HS60	1.8	60	1.7	3	6.2	7.3	4	280	102	0.55
DTM42HS60	1.8	60	1.2	6	7	5.6	6	280	102	0.55

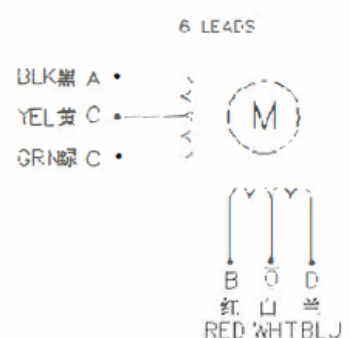
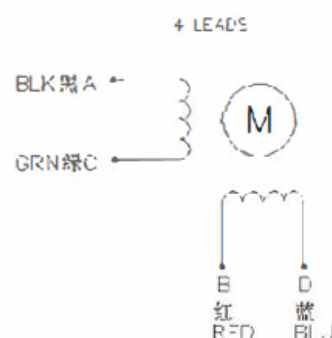
以上仅为代表产品，特殊要求产品可根据客户要求订制。

Above only for representative products, products of special request can be made according to the customer request.

### 电机外型图 / Dimensions: (单位 / Unit = mm)



### 接线图 / Wiring Diagram:



# 1.1 混合式步进电机

## Hybrid Stepper Motor

# 1.8° 57mm两相混合式圆形步进电机

## 1.8°57mm(NEMA23) 2phase hybrid Round stepper motor

### 基本性能 / General Specification:

项目	Item	性能 (Specifications)
步距角	Step Angle	1.8°
温升	Temperature Rise	80°C max
环境温度	Ambient Temperature	-20°C ~ +50°C
绝缘电阻	Insulation Resistance	100 MΩ Min. ,500VDC
电气强度	Dielectric Strength	500VAC for 1minute
径向间隙	Shaft Radial Play	0.02Max. (450g-load)
轴向间隙	Shaft Axial Play	0.08Max. (450g-load)
最大径向压力	Max. radial force	75N (20mm from the flange)
最大轴向压力	Max. axial force	15N



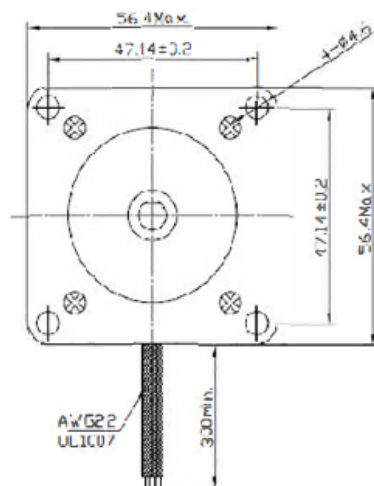
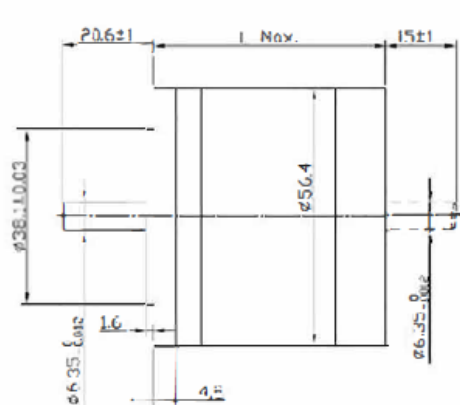
### 电机规格 / Electrical Specifications:

型号 Model No.	步距角 Step Angle	长度 Motor Length	电流 Current /Phase	电阻 Resistance /Phase	电感 Inductance /Phase	静转矩 Holding Torque	引线数 # of Leads	定位转矩 Detent Torque	转子惯量 Rotor Inertia	重量 Weight
	(°)	(L)mm	A	Ω	mH	kg.cm	No.	g.cm	g.cm <sup>2</sup>	Kg
DTM57HY41	1.8	41	0.4	30	30	2.88	6	180	57	0.54
DTM57HY41	1.8	41	1.56	1.8	3.6	4	4	180	57	0.54
DTM57HY51	1.8	51	0.42	29	36	4.97	6	350	110	0.6
DTM57HY51	1.8	51	2.8	0.85	2.1	6.9	4	350	110	0.6
DTM57HY56	1.8	56	0.6	20	32	6	6	420	135	0.65
DTM57HY56	1.8	56	2	3	7	8	4	420	135	0.65
DTM57HY76	1.8	76	1.5	3.6	6	9	6	720	200	0.95
DTM57HY76	1.8	76	4	0.88	2.6	14	4	720	200	0.95

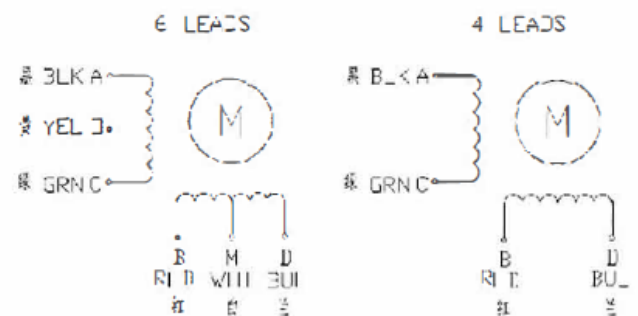
以上仅为代表产品，特殊要求产品可根据客户要求订制。

Above only for representative products, products of special request can be made according to the customer request.

### 电机外型图 / Dimensions: (单位 / Unit = mm)



### 接线图 / Wiring Diagram:





# 1.1 混合式步进电机

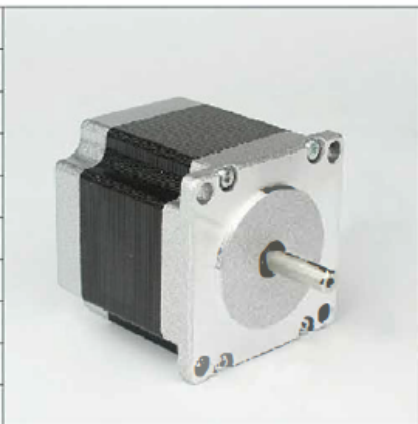
Hybrid Stepper Motor

# 0.9° 57mm两相混合式步进电机

0.9° 57mm(NEMA23)2phase hybrid stepper motor

## 基本性能 / General Specification:

项目	Item	性能 ( Specifications )
步距角	Step Angle	0.9°
温升	Temperature Rise	80°C max
环境温度	Ambient Temperature	-20°C ~ + 50°C
绝缘电阻	Insulation Resistance	100 MΩ Min. ,500VDC
电气强度	Dielectric Strength	500VAC for 1minute
径向间隙	Shaft Radial Play	0.02Max. (450g-load)
轴向间隙	Shaft Axial Play	0.08Max. (450g-load)
最大径向压力	Max. radial force	75N (20mm from the flange)
最大轴向压力	Max. axial force	15N



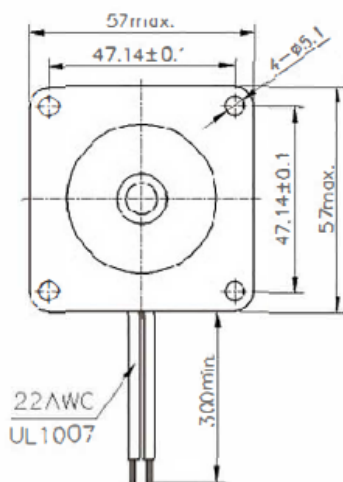
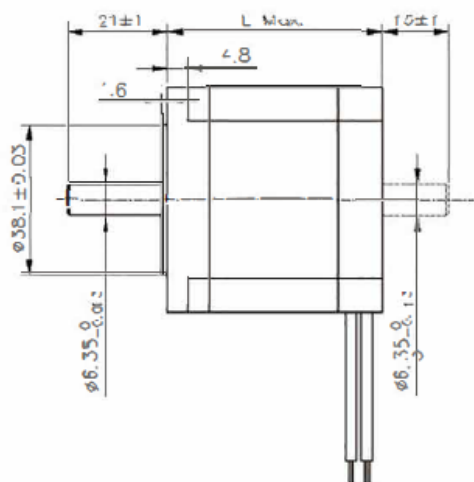
## 电机规格 / Electrical Specifications:

型号 Model No.	步距角 Step Angle	长度 Motor Length	电流 Current /Phase	电阻 Resistance /Phase	电感 Inductance /Phase	静转矩 Holding Torque	引线数 # of Leads	定位转矩 Detent Torque	转子惯量 Rotor Inertia	重量 Weight
	( ° )	(L)mm	A	Ω	mH	kg.cm	No.	g.cm	g.cm <sup>2</sup>	Kg
DTM57HM41	0.9	41	1	5.7	8	3.9	6	210	120	0.45
DTM57HM41	0.9	41	2.8	0.7	2.2	5	4	210	120	0.45
DTM57HM51	0.9	51	2	1.6	2.2	7.2	6	380	280	0.68
DTM57HM56	0.9	56	1	7.4	17.5	9	6	400	300	0.7
DTM57HM56	0.9	56	2	1.8	4.5	9	6	400	300	0.7
DTM57HM56	0.9	56	2.8	0.9	3.3	12	4	400	300	0.7
DTM57HM76	0.9	76	1	8.6	23	13.5	6	680	480	1
DTM57HM76	0.9	76	2	3	7	13.5	6	680	480	1
DTM57HM76	0.9	76	2.8	1.15	5.6	18	4	680	480	1

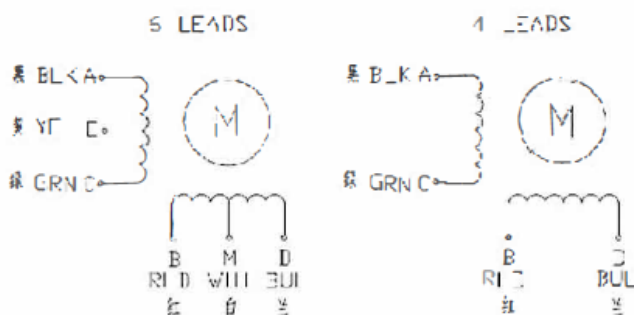
以上仅为代表产品，特殊要求产品可根据客户要求订制。

Above only for representative products, products of special request can be made according to the customer request.

## 电机外型图 / Dimensions: (单位 / Unit = mm)



## 接线图 / Wiring Diagram:

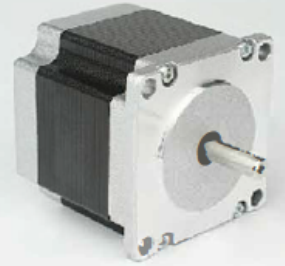


# 1.1 混合式步进电机 Hybrid Stepper Motor

# 1.8° 57mm两相混合式步进电机 1.8°57mm(NEMA23) 2phase hybrid stepper motor

## 基本性能 / General Specification:

项目	Item	性能 (Specifications)
步距角	Step Angle	1.8°
温升	Temperature Rise	80°C max
环境温度	Ambient Temperature	-20°C ~ +50°C
绝缘电阻	Insulation Resistance	100 MΩ Min. ,500VDC
电气强度	Dielectric Strength	500VAC for 1minute
径向间隙	Shaft Radial Play	0.02Max. (450g-load)
轴向间隙	Shaft Axial Play	0.08Max. (450g-load)
最大径向压力	Max. radial force	75N (20mm from the flange)
最大轴向压力	Max. axial force	15N



## 电机规格 / Electrical Specifications:

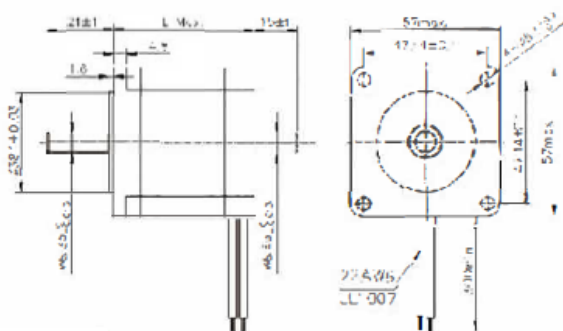
型号 Model No.	步距角 Step Angle	长度 Motor Length	电流 Current /Phase	电阻 Resistance /Phase	电感 Inductance /Phase	静转矩 Holding Torque	引线数 # of Leads	定位转矩 Detent Torque	转子惯量 Rotor Inertia	重量 Weight
	(°)	(L)mm	A	Ω	mH	N.m	No.	g.cm	g.cm <sup>2</sup>	Kg
DTM57HS41	1.8	41	1	7.1	8	0.48	6	250	150	0.47
DTM57HS41	1.8	41	2	1.4	1.4	0.39	8	250	150	0.47
DTM57HS41	1.8	41	2.8	0.7	1.4	0.55	4	250	150	0.47
DTM57HS51	1.8	51	1	6.6	8.2	0.72	6	300	230	0.59
DTM57HS51	1.8	51	2	1.8	2.7	0.9	8	300	230	0.59
DTM57HS51	1.8	51	2.8	0.83	2.2	1.01	4	300	230	0.59
DTM57HS56	1.8	56	2	1.8	2.5	0.9	6	350	280	0.68
DTM57HS56	1.8	56	2.1	1.8	2.5	1	8	350	280	0.68
DTM57HS56	1.8	56	2.8	0.9	2.5	1.2	4	350	280	0.68
DTM57HS64	1.8	64	2.8	0.8	2.3	1	4	400	300	0.75
DTM57HS76	1.8	76	2.8	1.1	3.6	1.89	4	600	440	1.1
DTM57HS76	1.8	76	3	1	1.6	1.35	6	600	440	1.1
DTM57HS76	1.8	76	3	1	1.8	1.5	8	600	440	1.1
DTM57HS82	1.8	82	3	1.2	4	2.1	4	1000	600	1.2
DTM57HS82	1.8	82	4	0.8	1.8	2	8	1000	600	1.2
DTM57HS82	1.8	82	4.2	0.7	2.5	2.2	4	1000	600	1.2
DTM57HS100	1.8	100	4.2	0.75	3	3	4	1100	700	1.3
DTM57HS112	1.8	112	3	1.6	7.5	3	4	1200	800	1.4
DTM57HS112	1.8	112	4.2	0.9	3.8	3.1	4	1200	800	1.4

以上仅为代表产品，特殊要求产品可根据客户要求订制。

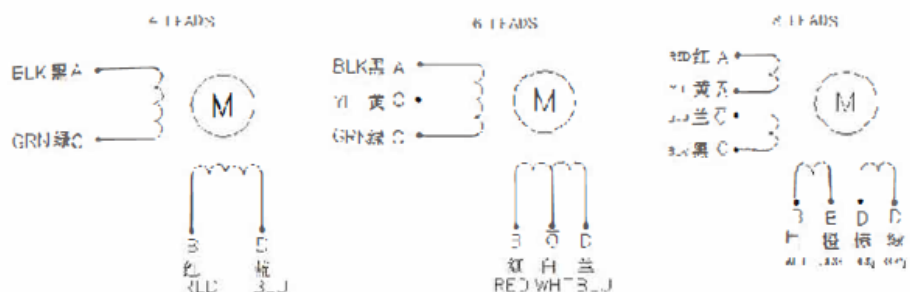
Above only for representative products, products of special request can be made according to the customer request.

## 电机外型图 / Dimensions:

(单位 / Unit = mm)



## 接线图 / Wiring Diagram:



# 1.1 混合式步进电机

## Hybrid Stepper Motor

# 1.8° 60mm两相混合式步进电机

## 1.8°60mm(NEMA24) 2phase hybrid stepper motor

### 基本性能 / General Specification:

项目	Item	性能 (Specifications)
步距角	Step Angle	1.8°
温升	Temperature Rise	80°C max
环境温度	Ambient Temperature	-20°C ~ +50°C
绝缘电阻	Insulation Resistance	100 MΩ Min. ,500VDC
电气强度	Dielectric Strength	500VAC for 1 minute
径向间隙	Shaft Radial Play	0.02Max. (450g-load)
轴向间隙	Shaft Axial Play	0.08Max. (450g-load)
最大径向压力	Max. radial force	75N (20mm from the flange)
最大轴向压力	Max. axial force	15N

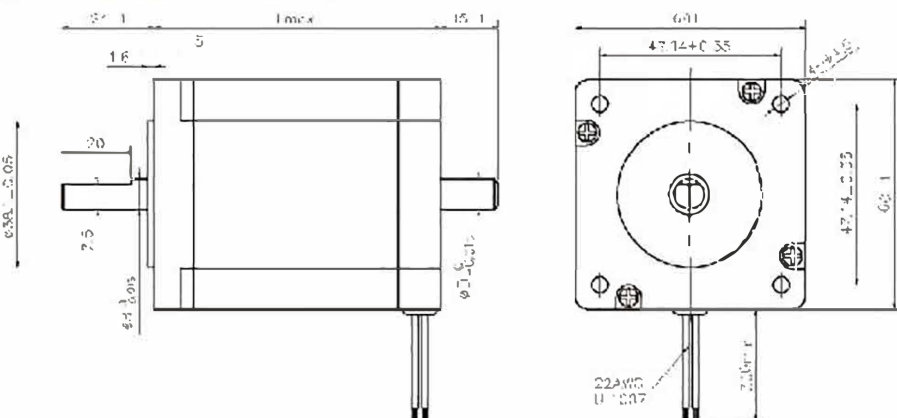


### 电机规格 / Electrical Specifications:

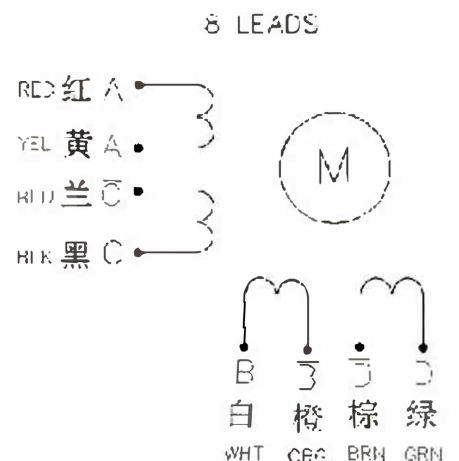
型号 Model No.	接线方式 ???	长度 Motor Length	电流 Current /Phase	电阻 Resistance /Phase	电感 Inductance /Phase	静转矩 Holding Torque	引线数 # of Leads	定位转矩 Detent Torque	转子惯量 Rotor Inertia	重量 Weight
		(L)mm	A	Ω	mH	N.m	No.	g.cm	g.cm <sup>2</sup>	Kg
DTM60HS56	单极	56	2	1.8	3.6	1.17	8	700	300	0.77
	并联		2.8	0.9	3.6	1.65				
	串联		1.4	3.6	14.4	1.65				
DTM60HS67	单极	67	2	2.4	4.6	1.5	8	900	570	1.2
	并联		2.8	1.2	4.6	2.1				
	串联		1.4	4.8	18.4	2.1				
DTM60HS88	单极	88	2	3	6.8	2.2	8	1000	840	1.4
	并联		2.8	1.5	6.8	3.1				
	串联		1.4	6	27.2	3.1				
DTM60HS100	单极	100	2	3.2	6.4	2.8	8	1100	980	1.7
	并联		2.8	1.6	6.4	4.0				
	串联		1.4	6.4	25.6	4.0				
DTM60HS111	单极	111	2.0	4.4	8.3	3.2	8	1200	1120	1.9
	并联		2.8	2.2	8.3	4.5				
	串联		1.4	8.8	33.2	4.5				

以上仅为代表产品，特殊要求产品可根据客户要求订制。  
Above only for representative products, products of special request can be made according to the customer request.

### 电机外型图 / Dimensions: (单位 / Unit = mm)



### 接线图 / Wiring Diagram:



## 1.1 混合式步进电机 Hybrid Stepper Motor

## 1.8° 86mm两相混合式步进电机 1.8°86mm(NEMA34) 2 phase hybrid stepper motor

### 基本性能 / General Specification:

项目	Item	性能 (Specifications)
步距角	Step Angle	1.8°
温升	Temperature Rise	80°C max
环境温度	Ambient Temperature	-20°C ~ +50°C
绝缘电阻	Insulation Resistance	100 MΩ Min. ,500VDC
电气强度	Dielectric Strength	820VAC for 1s 3mA
径向间隙	Shaft Radial Play	0.02Max. (450g-load)
轴向间隙	Shaft Axial Play	0.08Max. (450g-load)
最大径向压力	Max. radial force	220N (20mm from the flange)
最大轴向压力	Max. axial force	60N



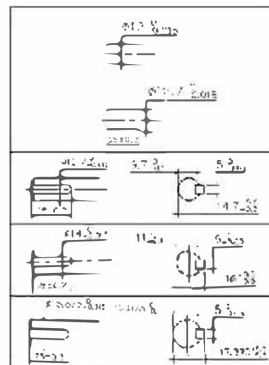
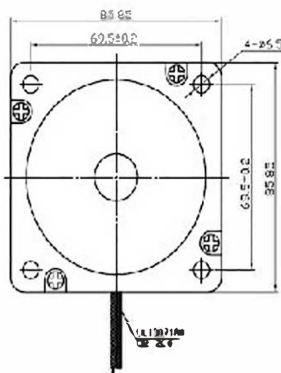
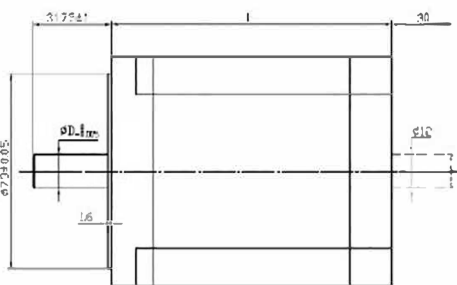
### 电机规格 / Electrical Specifications:

型号 Model No.	步距角 Step Angle	长度 Motor Length	电流 Current /Phase	电阻 Resistance /Phase	电感 Inductance /Phase	静转矩 Holding Torque	引线数 # of Leads	定位转矩 Detent Torque	转子惯量 Rotor Inertia	重量 Weight
	(°)	(L)mm	A	Ω	mH	N.m	No.	Kg.cm	g.cm <sup>2</sup>	Kg
DTM86HS68	1.8	67	5.9	0.28	1.7	3.4	4	0.8	1000	1.7
DTM86HS68	1.8	67	2.8	1.4	3.9	3.4	8	0.8	1000	1.7
DTM86HS78	1.8	78	5.5	0.46	4.0	4.6	4	1.2	1400	2.3
DTM86HS78	1.8	78	4.2	0.75	3.4	4.6	8	1.2	1400	2.3
DTM86HS97	1.8	97	4.5	0.66	3.0	5.8	4	1.7	2100	3.0
DTM86HS97	1.8	97	4.0	0.98	4.1	4.7	8	1.7	2100	3.0
DTM86HS100	1.8	100	6.0	0.36	2.8	7.0	4	1.9	2200	3.1
DTM86HS115	1.8	115	6.0	0.6	6.5	8.7	4	2.4	2700	3.8
DTM86HS115	1.8	115	4.2	0.9	6.0	8.7	8	2.4	2700	3.8
DTM86HS126	1.8	126	6.0	0.58	6.5	6.3	4	2.9	3200	4.5
DTM86HS155	1.8	155	6.0	0.68	9.0	13.0	4	3.6	4000	5.4
DTM86HS155	1.8	155	4.2	1.25	8.0	12.2	8	3.6	4000	5.4

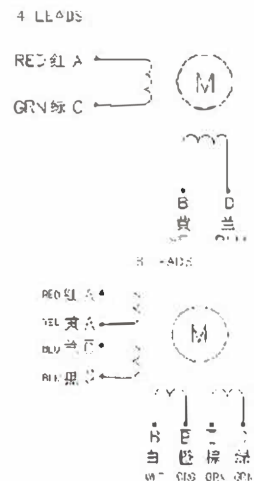
以上仅为代表产品，特殊要求产品可根据客户要求订制。

Above only for representative products, products of special request can be made according to the customer request.

### 电机外型图 / Dimensions: (单位 / Unit = mm)



### 接线图 / Wiring Diagram:



## 1.1 混合式步进电机 Hybrid Stepper Motor

## 1.8° 110mm两相混合式步进电机 1.8°110mm(NEMA42) 2phase hybrid stepper motor

### 基本性能 / General Specification:

项目	Item	性能 (Specifications)
步距角	Step Angle	1.8°
温升	Temperature Rise	80°C max
环境温度	Ambient Temperature	-20°C ~ +50°C
绝缘电阻	Insulation Resistance	100 MΩ Min. ,500VDC
电气强度	Dielectric Strength	820VAC for 1S 3mA
径向间隙	Shaft Radial Play	0.02Max. (450g-load)
轴向间隙	Shaft Axial Play	0.08Max. (450g-load)
最大径向压力	Max. radial force	220N (20mm from the flange)
最大轴向压力	Max. axial force	60N



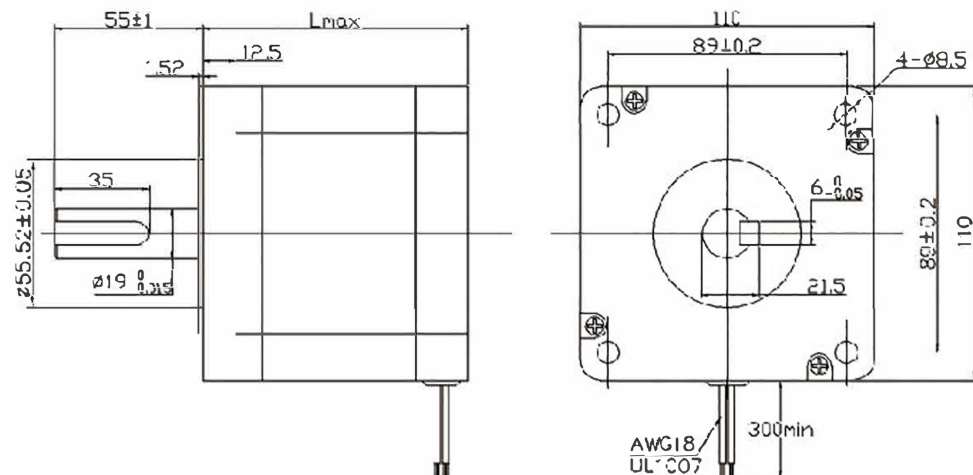
### 电机规格 / Electrical Specifications:

型号 Model No.	步距角 Step Angle	长度 Motor Length	电流 Current /Phase	电阻 Resistance /Phase	电感 Inductance /Phase	静转矩 Holding Torque	引线数 # of Leads	定位转矩 Detent Torque	转子惯量 Rotor Inertia	重量 Weight
	(°)	(L)mm	A	Ω	mH	N.m	No.	kg.cm	g.cm <sup>2</sup>	Kg
DTM110HS99	1.8	99	5.5	0.9	12	11.2	4	3	5500	5
DTM110HS115	1.8	115	6.0	0.48	7	12	4	4	7100	6
DTM110HS150	1.8	150	6.5	0.8	15	21	4	5.9	10900	8.4
DTM110HS165	1.8	165	6.0	0.9	14	24	4	6.6	12800	9.1
DTM110HS201	1.8	201	8.0	0.67	12	28	4	7.5	16200	11.8

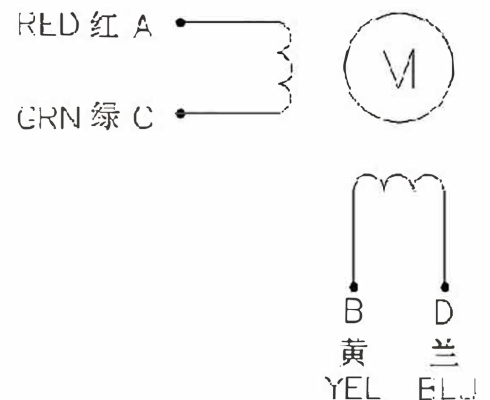
以上仅为代表产品，特殊要求产品可根据客户要求订制。

Above only for representative products, products of special request can be made according to the customer request.

### 电机外型图 / Dimensions: (单位 / Unit = mm)



### 接线图 / Wiring Diagram:



# 1.1 混合式步进电机

Hybrid Stepper Motor

# 1.8° 130mm二相混合式步进电机

1.8° 130mm(NEMA52) 2phase hybrid stepper motor

## 基本性能 / General Specification:

项目	Item	性能 ( Specifications )
步距角	Step Angle	1.8°
温升	Temperature Rise	80°Cmax
环境温度	Ambient Temperature	-20°C ~ +50°C
绝缘电阻	Insulation Resistance	100 MΩ Min. ,500VDC
绝缘强度	Dielectric Strength	1000VAC for 1minute
绝缘等级	Insulation Class	B



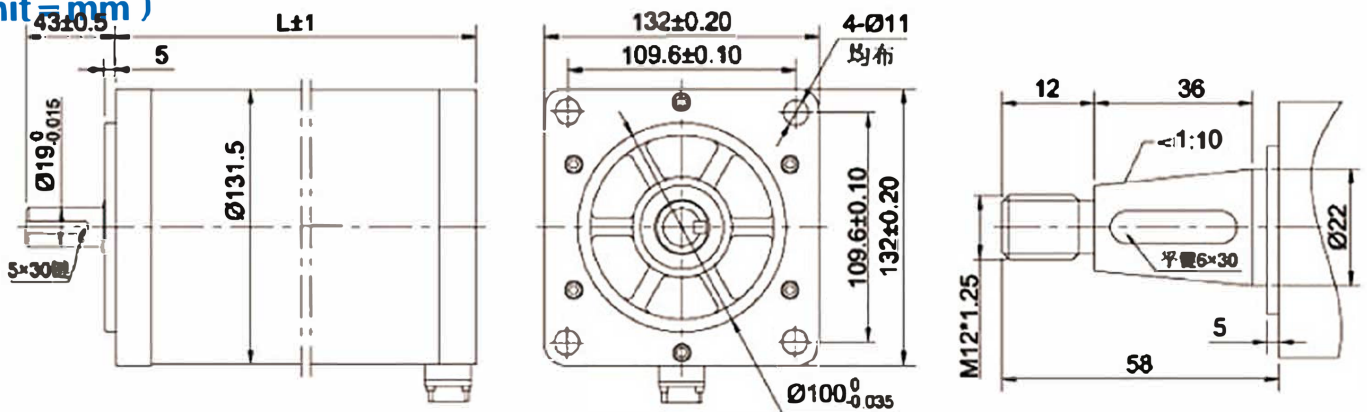
## 电机规格 / Electrical Specifications:

型号 Model No.	运行电压 Operating Voltage	额定电流 Rated Current	电阻 Resistance	电感 Inductance	保持转矩 Holding Torque	空载频率 Noload Frequency	启动频率 Starting Frequency	重量 Weight	长度 Length
	VDC	A	Ω	mH	N.m	No.	g.cm	kg	mm
DTM130HS173	80 ~ 325	6	0.75	12.6	25	25000	2300	13.3	173
DTM130HS229	80 ~ 325	6	0.83	13.2	30	25000	2300	18	229
DTM110HS257	80 ~ 325	7	0.73	11.7	40	23000	2200	19	257
DTM130HS285	80 ~ 325	7	0.66	10	50	23000	2200	22.5	285

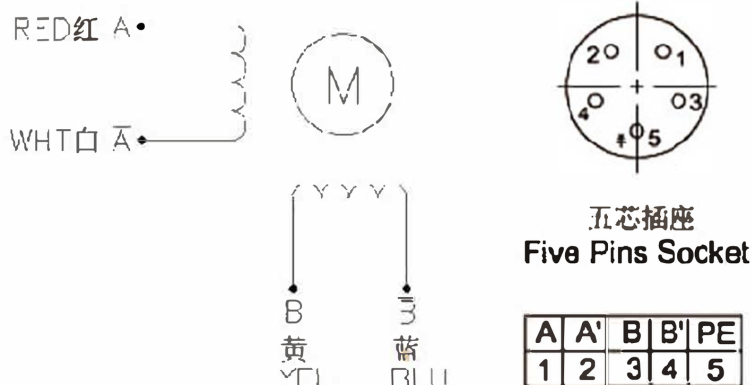
以上仅为代表产品，特殊要求产品可根据客户要求订制。

Above only for representative products, products of special request can be made according to the customer reque

## 电机外型图 / Dimensions: (单位/Unit = mm)



## 接线图 / Wiring Diagram:

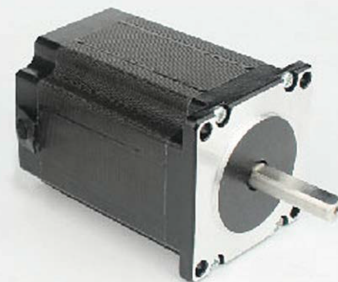


## 1.1 混合式步进电机 Hybrid Stepper Motor

## 1.2° 57mm三相混合式步进电机 1.2°57mm(NEMA23) 3phase hybrid stepper motor

### 基本性能 / General Specification:

项目	Item	性能 (Specifications)
步距角	Step Angle	1.2°
温升	Temperature Rise	80°C max
环境温度	Ambient Temperature	-20°C ~ +50°C
绝缘电阻	Insulation Resistance	100 MΩ Min. ,500VDC
电气强度	Dielectric Strength	500VAC for 1 minute
径向间隙	Shaft Radial Play	0.02Max. (450g-load)
轴向间隙	Shaft Axial Play	0.08Max. (450g-load)
最大径向压力	Max. radial force	75N (20mm from the flange)
最大轴向压力	Max. axial force	15N



### 电机规格 / Electrical Specifications:

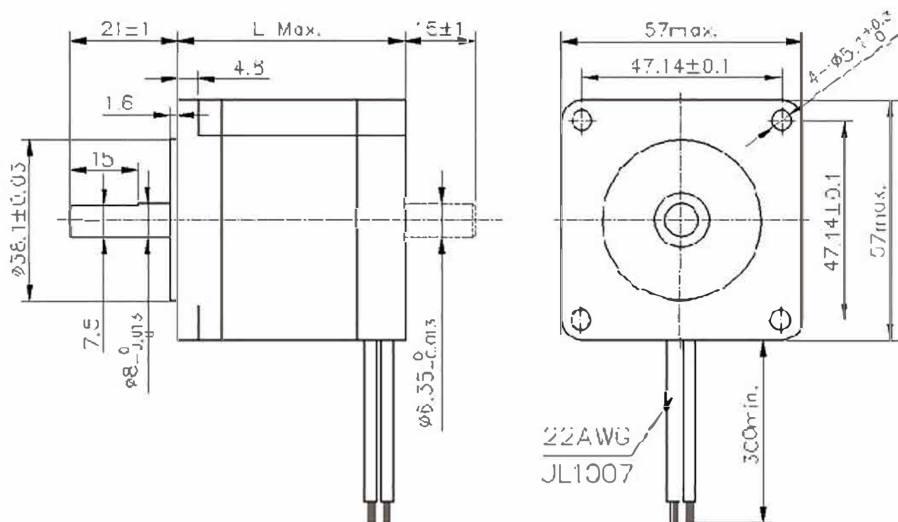
型号 Model No.	步距角 Step Angle	长度 Motor Length	电流 Current /Phase	电阻 Resistance /Phase	电感 Inductance /Phase	静转矩 Holding Torque	定位转矩 Detent Torque	转子惯量 Rotor Inertia	重量 Weight
	(°)	(L)mm	A	Ω	mH	kg.cm	g.cm	g.cm <sup>2</sup>	Kg
DTM57H3P42	1.2	42	5.2	1.3	1.4	4.5	210	110	0.45
DTM57H3P56	1.2	56	5.6	0.7	0.7	9	400	300	0.75
DTM57H3P79	1.2	79	5.2	0.9	1.5	15	680	480	1.1

以上仅为代表产品，特殊要求产品可根据客户要求订制。

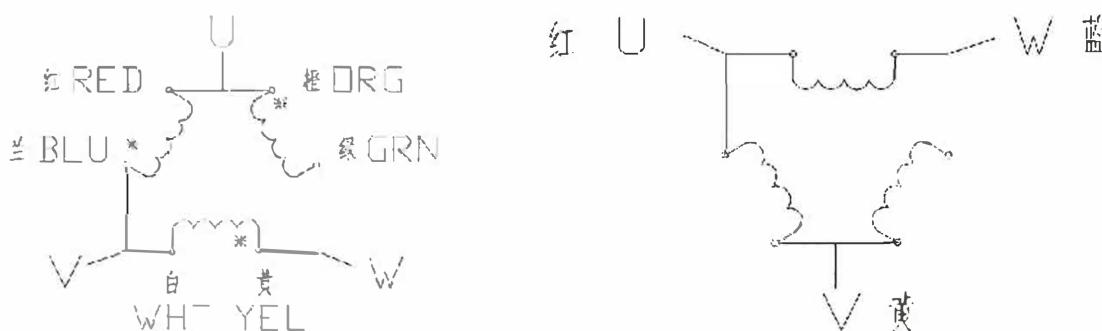
Above only for representative products, products of special request can be made according to the customer request.

### 电机外型图 / Dimensions:

(单位 / Unit = mm)



### 接线图 / Wiring Diagram:

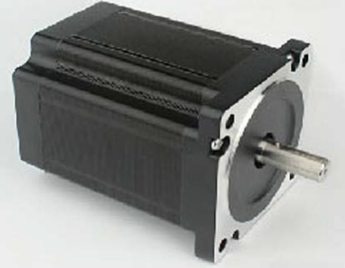


## 1.1 混合式步进电机 Hybrid Stepper Motor

## 1.2° 86mm三相混合式步进电机 1.2°86mm(NEMA34) 3 phase hybrid stepper motor

### 基本性能 / General Specification:

项目	Item	性能 (Specifications)
步距角	Step Angle	1.2°
温升	Temperature Rise	80°Cmax
环境温度	Ambient Temperature	-20°C ~ +50°C
绝缘电阻	Insulation Resistance	100Ω Min. ,500VDC
电气强度	Dielectric Strength	500VAC for 1minute
径向间隙	Shaft Radial Play	0.02Max. (450g-load)
轴向间隙	Shaft Axial Play	0.08Max. (450g-load)
最大径向压力	Max. radial force	75N (20mm from the flange)
最大轴向压力	Max. axial force	15N



### 电机规格 / Electrical Specifications:

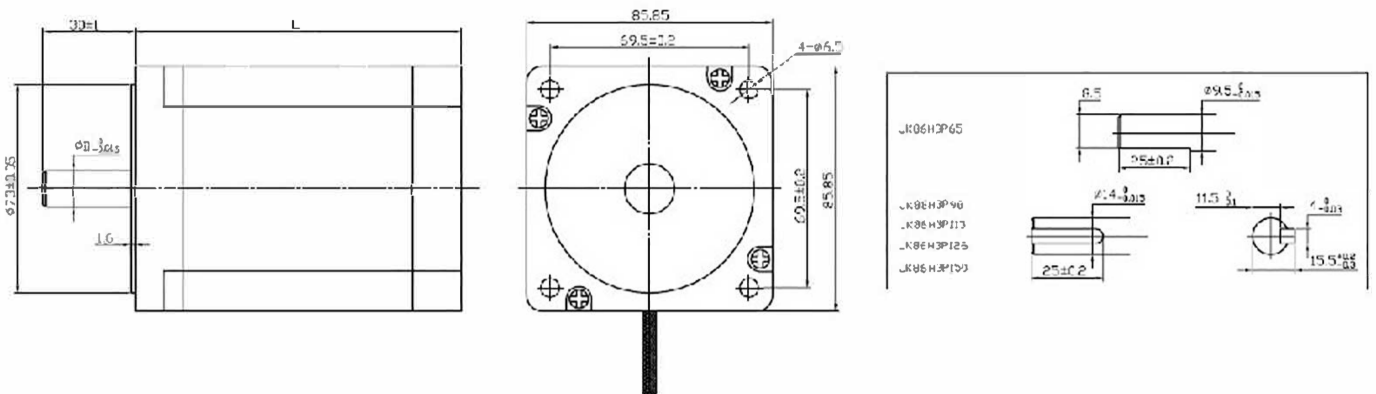
型号 Model No.	步距角 Step Angle	长度 Motor Length	电流 Current /Phase	电阻 Resistance /Phase	电感 Inductance /Phase	静转矩 Holding Torque	转子惯量 Rotor Inertia	重量 Weight
	(°)	(L)mm	A	Ω	mH	N.m	g.cm <sup>2</sup>	Kg
DTM86H3P65	1.2	65	3.0	0.5	1.6	2	1100	1.65
DTM86H3P98	1.2	98	5.2	0.6	3	4.5	2320	2.70
DTM86H3P113	1.2	113	5.2	0.9	5.9	6	3100	3.50
DTM86H3P126	1.2	126	6.0	0.75	2.4	6	3300	3.80
DTM86H3P150	1.2	150	5.0	1.5	3	7	4650	5.10

以上仅为代表产品，特殊要求产品可根据客户要求订制。

Above only for representative products, products of special request can be made according to the customer request.

### 电机外型图 / Dimensions:

(单位 / Unit = mm)



### 接线图 / Wiring Diagram:





## 1.1 混合式步进电机 Hybrid Stepper Motor

## 1.2° 110mm三相混合式步进电机 1.2° 110mm(NEMA42) 3phase hybrid Stepper motor

### 基本性能 / General Specification:

项目	Item	性能 ( Specifications )
步距角	Step Angle	1.2°
温升	Temperature Rise	80°C max
环境温度	Ambient Temperature	-20°C ~ +50°C
绝缘电阻	Insulation Resistance	100 MΩ Min. ,500VDC
电气强度	Dielectric Strength	500VAC for 1 minute
径向间隙	Shaft Radial Play	0.02Max. (450g-load)
轴向间隙	Shaft Axial Play	0.08Max. (450g-load)
最大径向压力	Max. radial force	220N (20mm from the flange)
最大轴向压力	Max. axial force	60N



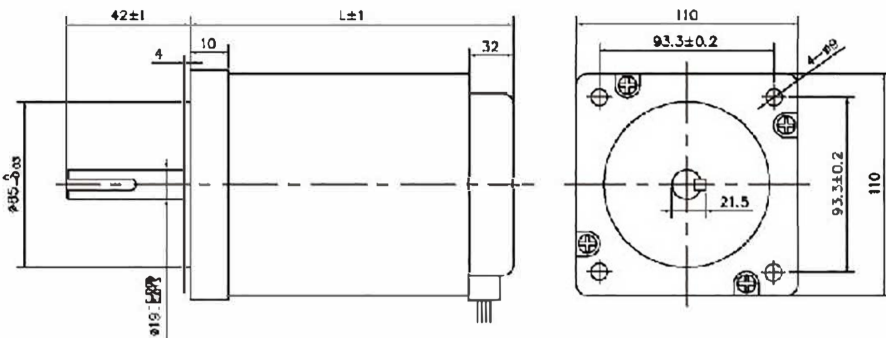
### 电机规格 / Electrical Specifications:

型号 Model No.	步距角 Step Angle	长度 Motor Length	电流 Current /Phase	电阻 Resistance /Phase	电感 Inductance /Phase	静转矩 Holding Torque	转动惯量 Rotor inertia	引线数 # of Leads	重量 Weight
	( ° )	(L)mm	A	Ω	mH	N.m	g.cm <sup>2</sup>		Kg
DTM110H3P134	1.2	134	3	3.15	17	8	9750	3	7.8
DTM110H3P162	1.2	162	3	4.2	22	13	12100	3	8.3
DTM110H3P194	1.2	194	5	2.14	17.5	16	15300	3	10.5
DTM110H3P233	1.2	233	5	1.93	23	20	18600	3	12.6
DTM110H3P253	1.2	253	5	2.4	24.4	22	21000	3	13.1
DTM110H3P285	1.2	285	5	2.9	27	25	24300	3	14.8

以上仅为代表产品，特殊要求产品可根据客户要求订制。

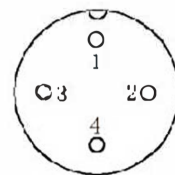
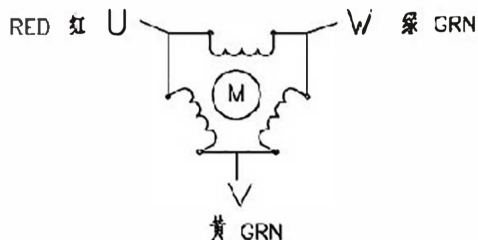
Above only for representative products, products of special request can be made according to the customer request.

### 电机外型图 / Dimensions: (单位 / Unit = mm)

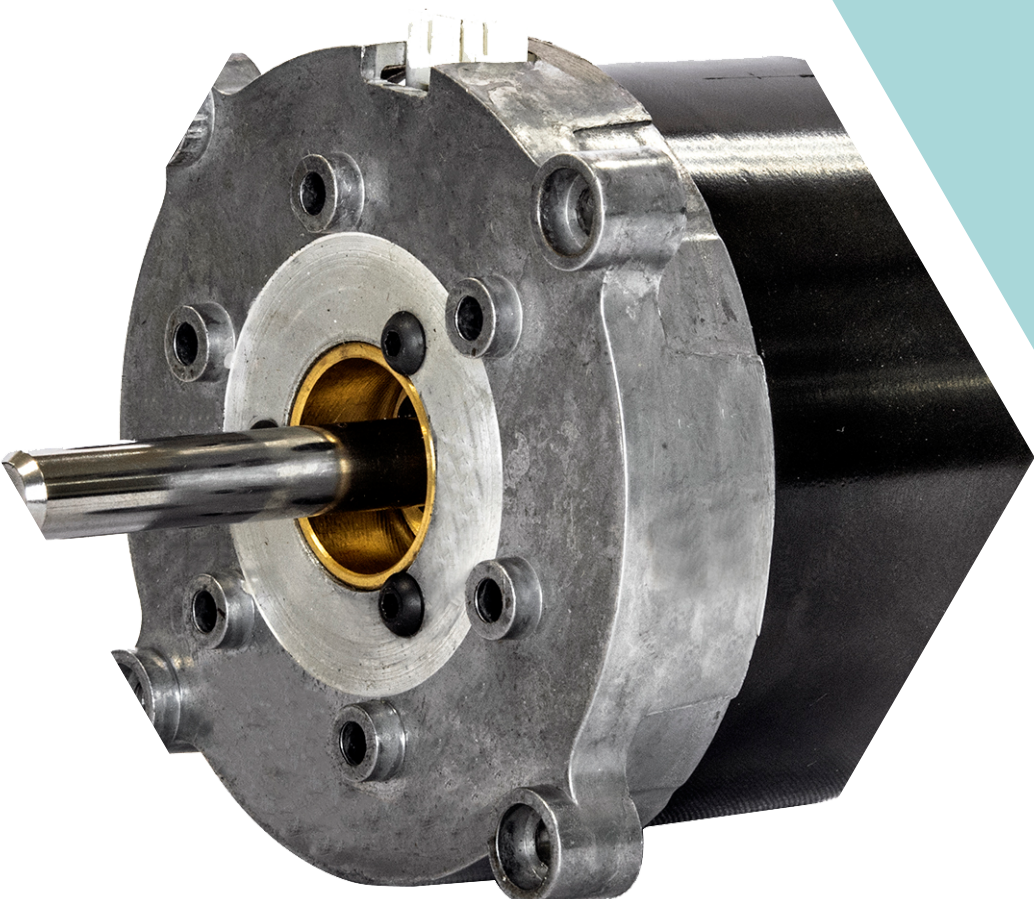


型号 Mod-1	轴径 Shaft Φ (mm)	轴伸 Shaft Type (mm)	轴长 Shaft L (mm)
JK110H3P134-3003	19	平键 6X6X25	42
JK110H3P162-3003	19	平键 6X6X25	42
JK110H3P194-5003	19	平键 6X6X25	42
JK110H3P233-5003	19	平键 6X6X25	42
JK110H3P253-5003	19	平键 6X6X25	42
JK110H3P285-5003	19	平键 6X6X25	42

### 接线图 / Wiring Diagram:



序号	1	2	3	4	备注
相序	U	V	W	GND	四芯插座



**9F-1, 472, CHUNG SAN 2ND ROAD, KAOHSIUNG 800, TAIWAN**

**TEL:+886-7-2824356**

**FAX:+886-7-2414287**

**E-MAIL:INFO@SYMBANG.COM.TW**