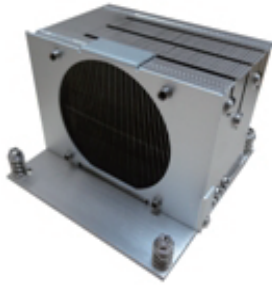


CC9066



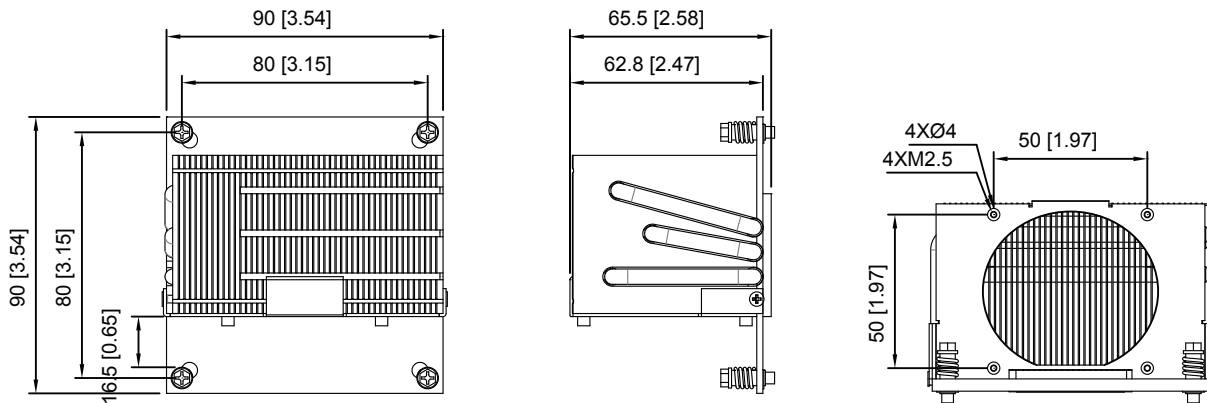
90x90x66mm
(3.51"x3.51"x2.57")



Cooler Type
Thermal Design
Fan
Heatsink
Fastener
TIM

Intel 1366 & 1356 2U Active
Power 95-130W
NMB 6025 7500 RPM Two Ball
Al Stacked Fin Cu & Al Base Pipe/3 pcs
Screw(M3) Spring
7783

DIMENSION



UNIT:mm[inch]

SPECIFICATION

MODEL NO.	RATED VOLTAGE (V)	RATED CURRENT (A)	INPUT POWER (W)	SPEED (RPM)	MAX. AIR PRESSURE		MAX. AIR FLOW		NOISE dB(A) @1M
					inchH ₂ O	mmH ₂ O	CFM	m ³ /min	
CC906612V	12	0.90	10.80	9800	1.17	29.72	55.52	1.57	29.32