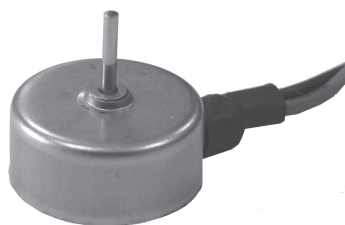


DM 1306



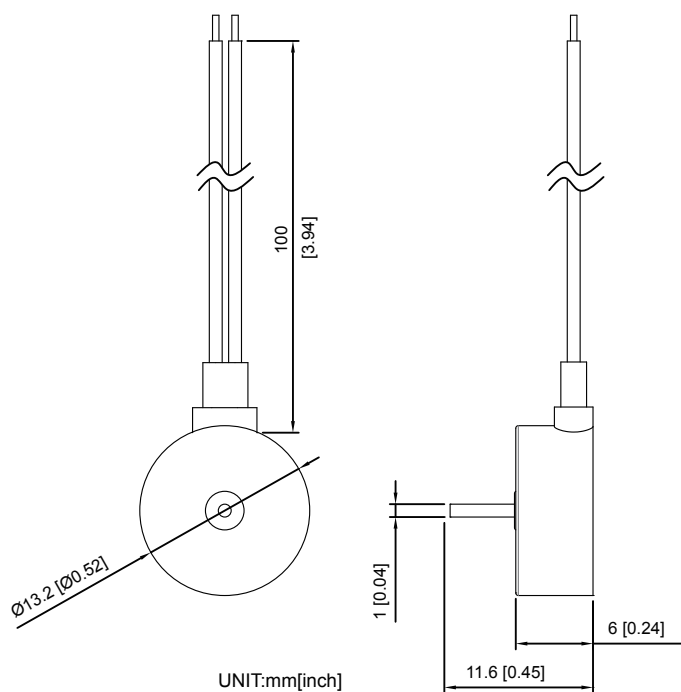
Ø13x6mm
(Ø0.51"x0.23")



MOTOR
BEARING
TERMINATION
OPERATING TEMPERATURE
INSULATION RESISTANCE
DIELECTRIC STRENGTH
WEIGHT

Mini Brushless Motor
Sleeve
Lead Wire
-10°C to + 60°C
10M Ohms Min. @500VDC
5mA Max. at 500VAC 60Hz for 1 minute
4.5g

DIMENSION



SPECIFICATION

MODEL NO.	RATED VOLTAGE (V)	RATED CURRENT (A)	INPUT POWER (W)	SPEED (RPM)	MAX. AIR PRESSURE		MAX. AIR FLOW		NOISE dB(A) @1M
					inchH ₂ O	mmH ₂ O	CFM	m ³ /min	
DM1306V5HS	5	0.066	0.33	18000	-	-	-	-	-